

ANNUAL REPORT OF PROMISEDLAND COMMUNITY SERVICES

REGISTRY OF SOCIETIES NUMBER: ROS 319/2002WEL

UEN No: T02SS0212H

IPC NO: 000710

REGISTERED ADDRESS: BLOCK 151 BUKIT BATOK STREET 11, #03-248, SINGAPORE 650151

TABLE OF CONTENTS

Contents

About Us	Page 1
What We Do	Page 2
Lifeblood Centre	Page 3
Educational Foundation	Page 5
Student Care Centre	Page 7
Events and New Initiatives	Page 8
Financial Highlights	Page 11
Board of Governance	Page 20
Contact Us	Page 23

ABOUT US

VISION

To present opportunities to live life to the fullest

MISSION

C.A.R.E – Commitment, Assurance, Responsibility, Empathy

Motto

Every Life has a Promise

Promisedland Community Services (PCS), registration number: ROS 319/2002WEL, a charity with registered address located at Block 151, Bukit Batok Street 11, #03-248, Singapore 650151, was founded by the late Rev Christopher Lee in 2002. Rev Lee was a patient suffering from a blood illness and liver cirrhosis. He truly understood the difficulties faced by the patients, not just financially but also emotionally. He went through times of hopelessness and despair, seeing no light at the end of the tunnel. However, he gradually overcame the hopelessness and decided that in his time, he wants to help other patients.

With this intention, he founded Promisedland Community Services. Promisedland Community Services started with Lifeblood center which provides services and support to patients suffering from blood illnesses and cancer. Rev Lee also enjoyed having children and youths around him, he also wanted to help children and youths in low-income families have equal opportunities to develop. Hence, Educational Foundation was set up. PCS had its first office in Bukit Batok Street renting a small unit on the second floor above a hair salon.

Rev Lee passed away in 2009, but the legacy and burden of providing hope and support to the beneficiaries is still very much in active in PCS. The board and staffs of PCS will continue to give our utmost best to provide help and support to our beneficiaries.

PCS is established in Singapore under the Societies Act, Chapter 311. It is also subject to the provisions of the Charities Act, Chapter 37. It is an Institution of a Public Character.

PCS is governed by our Constitution, which restricts the use of fund monies to the furtherance of the objects of the Society

WHAT WE DO

OUR OBJECTIVES

Our principal objectivities are: -

- To aid beneficiaries who are facing sudden change in their lives due to illness
- To help ease medical and transport costs faced by the beneficiaries
- To provide youths and children from low-income families a chance to be nurtured and developed.
- To give support to beneficiaries and their family member

Promisedland Community Services (“PCS”) contributes to society via 3 major initiatives.

They are: -

1. Lifeblood Centre



2. Education Foundation



3. Student Care Services



LIFEBLOOD CENTRE

Description

Lifeblood Centre was founded in 2004 with the purpose of serving people with blood disorders by easing the financial burden of them and their immediate families. As we grow and develop with the purpose to help as many as we can, Lifeblood Centre eventually opened our doors to people with all cancers island wide as well.

A diagnosis of cancer or blood disorder sets off a long and slow process of treatment and care. The physical, emotional, and social quality of the lives of the patients and loved ones are reduced because of the illness. Lifeblood Centre aims to bring hope to the patients and their families in battling the illness, by reminding them that there are people in the society that are willing to bear their problems with them and walk with them on the journey to recovery.

Lifeblood Financial Aid

1. Medical Subsidy

Subsidy for medical consumables required for the treatment or maintenance of illness is available. We subsidise consumables such as needles and syringes for chelation, port expenses, diapers, milk feeds, wound care consumables, and stoma consumables among others. We also subsidise equipment or the rental of equipment such as Chrono pumps and oxygen concentrators.

2. Transport Subsidy

The Lifeblood Centre offers subsidy for taxi trips or ambulance services between the hospital and home for treatment and appointments. This benefits beneficiaries who experiences limited mobility, debilitating complications or side effects of treatment or the illness itself, or who are advised by their doctor to avoid public transport. Subsidy for transport to the hospital and back for treatment or follow-up is available.

Transport subsidy comes in two forms:

a. Taxi Reimbursement

Patients who require to take taxi to the hospital can apply for taxi reimbursement for such trips.

b. Ambulance Subsidy

Patients who need to be transported to the hospital in the ambulance because they are bedridden, or because of severe mobility difficulties or complications can apply for reimbursement of ambulance trips.

c. Grab Service

Tech-savvy beneficiaries are encouraged to use Grab hailing service for their hospital appointments. The ability to be at the beneficiaries' doorstep is a major point for this adoption. It will be less taxing in this way, especially to those who are immobile.

Moving to Grab's usage has given Lifeblood centre the ease of administration.

LIFEBLOOD CENTRE

3. Cozy Corner – Canaan

Lifeblood Centre has a cozy corner in Eden with the sole purpose of building a closer relationship with our beneficiaries, volunteer, and staff members. The cozy corner will serve as the place for them to relax and be comfortable. Through this 'corner', we hope to bring in another channel for interaction among our staffs and beneficiaries, rather than during only during home visitations. We also hope to get the beneficiaries out of their home to keep them active during their recovery period.

Since the setup of this corner, the beneficiaries have been very supportive. They are pro-active in organising the sessions to mingle around. Friendships have been forged through these sessions. Lifeblood centre is pleased to see our beneficiaries getting together and supportive of each other.

Lifeblood centre has been continuing the partnership with NUH, SGH, KKH for patients' referrals. As of 31st December 2019, the total number of active cases under Lifeblood Centre is 94.

EDUCATION FOUNDATION

Description

The purpose for Educational Foundation (EF) is to provide services and programs for children and youths to be involved in activities which would steer them away from harmful vices. Special assistance is also provided for children in low income or dysfunctional families to have an opportunity to be nurtured and developed.

Under EF, there are various programs for the children and youths.

- Super Kid
- Hang Out
- Promisedland Football

Super Kid

Super Kid provides financial assistance to school going children from low-income families. This fund is to be used for educational purposes like paying of schoolbooks, monthly allowance and other school needs. Other forms of benefits include: Subsidised student care centre fee at Promisedland Student care centre, subsidised enrichment classes, subsidised tuition class, community work involvement and family bonding activities.

Hang Out

Most parents work in the day and youths are often left alone at home with much parental guidance or proper supervision. With the exposure of social media platforms, youths are more likely to be engaged in activities that worry the adults.

We are targeting no risk and low risk youths aged 12 to 17 years. These are mainly Primary Six to Secondary school level especially those from our student care centre. The purpose of this 'Hangout' is to allow these youths to be in a safe and controlled environment instead of loitering in the neighbourhood or shopping centres. We have seen a trend in recent youth crimes and this 'Hangout' will be able to house these youths under our supervision. They will be participating in wholesome and meaningful activities that bring out the best in them. These youths need to understand themselves better their energy to channel in the right positive direction. The staff will be here to provide a social and emotional support to these youths if they face any issues and are reluctant to share with their family members at home. Our staff believe that it is important to understand them and their concerns and challenges. We will also be developing them in their leadership qualities, a sense of belonging and recognition in their lives.

EDUCATION FOUNDATION

Promisedland Football

“The socialism I believe in is everybody working for the same goal and everybody having a share in the rewards. That's how I see football, that's how I see life.”

Bill Shankly

(Quote from one of the greatest football managers in Liverpool football club history)

As a source of great inspiration to the founders and members of Promisedland football, this program aims to inspire the youths of Singapore to have a goal in their life and to work hard towards it.

Today's youths lack of good role models and has limited parental supervision in their daily lives. Having easy access to the internet also leads to undesirable exposure of media which contributes a significant part of decay in their moral and social values.

Our program tailors to build positive character to the “Young and Dangerous” through football. Influencing youths with sports during these children to teenager stage is a highly effective way to keep them on the right track. Values like teamwork, responsibility to self, respect to others and leadership qualities are imparted to the boys gradually. Opportunities are provided to them to experience these values practically during their years in this academy. For more than a decade, we have worked with many batches of young people at the stage of their ‘rebellious years’, helping them overcome their tough personal/ family situations. We find satisfaction in witnessing our boys overcome this stage of their life and matured into fine adults integrating into the society.

Most youths enjoy social games that expend their energy and require interaction and we believe that sports are a fantastic way to influence them. By belonging to a team, the boys will be able to find the support and comfort they need. This is much more desirable than involving in unlawful activities. Working together towards a common goal such as winning a game will help the boys find the recognition they need.

Other than as a sports platform, our program seeks to motivate the youths in their academic and to complement with our Super Kid program, giving access of such activity for children from low-income family.

As of 31st December 2019, the total number of youths under Promisedland Football is 42.

STUDENT CARE CENTRE

Description

In many lower income families, parents face problems of not being able to pay the fees for the Student Care Centre.

Even though our fees are low compared to other centres, we still aim to provide children with proper supervision and environment. We create a 'home away from home' environment where children receive homework supervision, character education, ample rest, and healthy meals. We strongly believe that every child is an individual and requires our utmost attention. We also believe in providing an atmosphere that encourages collaborative learning and promotes interpersonal development. We aim to nurture the best out of every child through physical, intellectual, emotional and social development. We stress good self-esteem, problem solving and decision-making skills, independence, and the ability to work with their peers.

Our teachers are dedicated and committed towards every child. We strongly believe that every child is an individual. They learn and grow differently. We plan weekly 'Teacher Guided Activities', mostly hands-on activities for the children. We want the children to take a break from their daily assessment books to learn other skills and develop their interest in other areas like art and craft, Science experiments, baking sessions etc.

We are also conducting a weekly 'Talking Session' where teachers will educate the children on good character values and current affair news. This is to allow our children to be exposed to the environment around them so that they will be able to develop social skills by interacting with the teachers and peers. We noticed that children are engaged mostly to handheld devices and are lacking in their social skills. We hope that we will be able to build a good teacher-student rapport with them through these 'Talking Session'.

There are also enrichment classes by external vendors for our children during the school holidays. These enrichment classes are based on the needs of the children and feedbacks from parents. Our school holidays schedule is fun filled with interesting activities which the children are always looking forward to. As they spend longer hours in the centre with us during the holidays, our teachers always ensure that there are activities for the children to be participating in. We also plan excursions for them to bring them out of the centre to give children educational experiences away from their regular school environment. When children visit different educational facilities, they learn in a more hands-on and interactive manner than they do in school. After all, children learn through play.

As of 31st December 2019, we have a total enrolment of 85 students and 8 of them are under Student Care Fee Assistance (SCFA) subsidy.

EVENTS & NEW INITIATIVES

Events in 2019 –

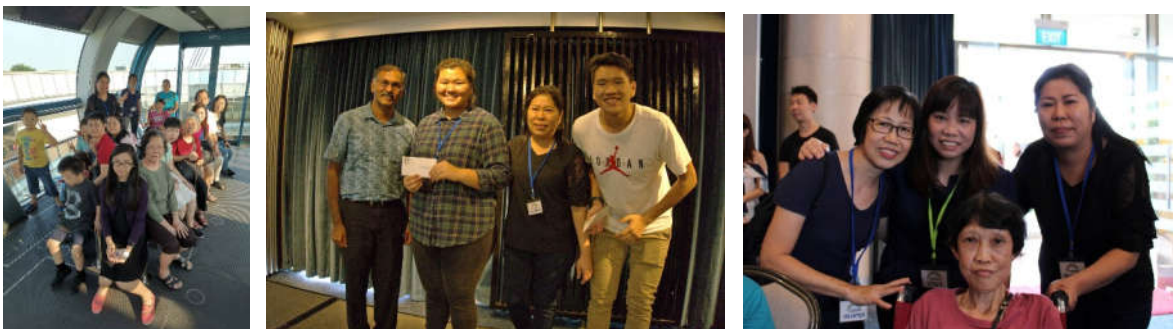
1. Opening of Canaan on 29th March 2019



2. Promisedland Football Malacca Trip 2019



3. Together@Flyer



EVENTS & NEW INITIATIVES

New initiatives in 2019-

1. Beneficiaries and Volunteers Get-together sessions



2. Start Small, Dream Big Project (Student Care Centre) – Appreciating our community helpers 2019



EVENTS & NEW INITIATIVES

Future Plans in 2020 -



Promisedland CARES

Promisedland CARES aims to provide temporary relief and support to the community in Bukit Batok. Recruitment of volunteers among the Bukit Batok community for prompt help to be rendered.



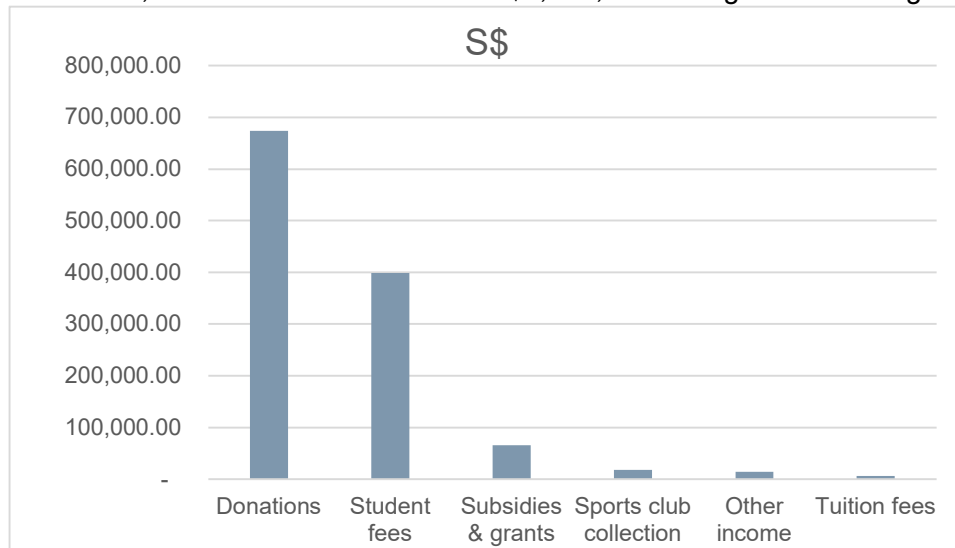
JIAK

Gathering of beneficiaries and community for healthy cooking sessions. This program aims to be a befriender group and support group for the participants

FINANCIAL HIGHLIGHTS

Principal funding sources of the charity

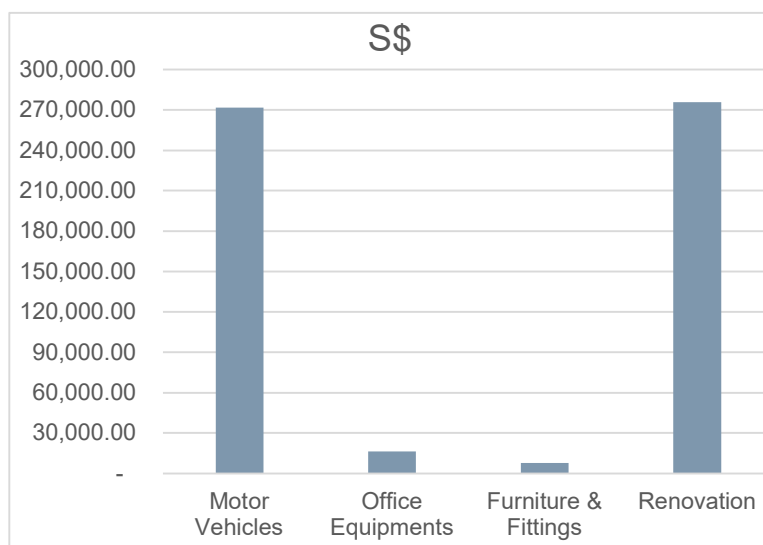
In FY2019, we have a total income of S\$1,177,363 through the following avenues: -



Donations makes up 57.24% of our income. Such donations are mainly solicited via 3rd party fund raisers.

Key fixed assets of charity

As at 31st December 2019, our assets have a Net Book Value of S\$571,708. Our assets generally consist of the following: -



FINANCIAL HIGHLIGHTS

Renovation makes up 48.24% of our fixed assets. Expansion of new unit to accommodate more youths and house more activities for them. Also, renovated a corner of our office unit to create a cosy and vibrant setting for all staffs, volunteers, and beneficiaries.

Financial highlights of Lifeblood Centre

Receipts for FY2019: S\$ 334,119

Disbursements for FY2019: S\$ 352,020

Deficit for FY2019: S\$ (17,901)

Majority of receipts are from public donations.

Major disbursements are for subsidy for medical consumables, transport, medication, and overheads.

Financial highlights of Student Care Centre

Receipts for FY2019: S\$ 163,556

Disbursements for FY2019: S\$ 168,250

Deficit for FY2019: S\$ (4,694)

Majority of receipts are from fees collected.

Major disbursements are for overheads and programs

Financial highlights of Education Foundation

Receipts for FY2019: S\$ 21,233

Disbursements for FY2019: S\$ 78,109

Deficit for FY2019: S\$ (56,876)

Majority of receipts are from public donations.

Major disbursements are for monthly school pocket money, character development programs, enrichment classes, student centre subsidy, overheads.

FINANCIAL HIGHLIGHTS

Financial statement for Year Ended 31st December 2019

PROMISEDLAND COMMUNITY SERVICES		Statement of Comprehensive Income for the financial year ended 31 December 2019	
	Notes	2019 S\$	2018 S\$
Income			
Donations Received	9	673,901	747,898
Student Fees		398,837	348,718
Subsidies and Grants		65,687	32,079
Other Income	12	30,988	21,982
Tuition Fees		6,150	37,645
Rental		1,800	-
		1,177,363	1,188,322
Less: Expenditure			
Accountancy Fee		-	2,500
Administration and Consultants' Fees for Functions and Events	13	189,607	212,589
Auditor's Remuneration		6,882	8,747
Bank Charges		844	344
Computer Expenses		3,673	4,371
Food Catering		50,593	39,580
CPF Contribution		188,773	176,078
Depreciation of Property, Plant and Equipment		214,589	118,133
Event Subsidies		15,791	25,491
General Expenses		27,570	33,088
Insurance		7,640	3,075
Marketing		2,900	3,678
Medical Subsidies		64,587	79,627
Membership Fees		392	821
Printing, Stationery and Postages		2,981	2,391
Rental of Premises and Equipment		119,412	102,934
Repairs and Maintenance		15,850	18,546
Salaries and Related Costs		468,224	447,706
Sports Subsidies		24,840	11,196
Services and Conservancy Charges		16,384	14,525
Telephone		5,956	5,611
Transport Expenses		61,718	60,331
Vehicle Upkeep		19,490	14,521
Water and Light		16,332	11,772
Minor Assets		1,503	2,879
		1,526,531	1,400,534
Net (Deficit) for the Financial Year		(349,168)	(212,212)
Other Comprehensive Surplus		30,538	1,823
Total Comprehensive (Deficit) for the Financial Year		(318,630)	(210,389)

FINANCIAL HIGHLIGHTS

PROMISEDLAND COMMUNITY SERVICES

Statement of Financial Position for the
financial year as at 31 December 2019

	Notes	2019 S\$	2018 S\$
ASSETS			
Non-Current Assets			
Property, Plant and Equipment	23	571,708	623,589
Total Non-Current Assets		571,708	623,589
Current Assets			
Cash and Cash Equivalents	8	792,923	1,072,875
Trade and Other Receivables	10	36,198	89,783
Investments	14	524,613	494,075
Total Current Assets		1,353,734	1,656,733
TOTAL ASSETS		1,925,442	2,280,322
LIABILITIES			
Non-Current Liability			
Finance Lease Obligations	15	-	861
Current Liabilities			
Finance Lease Obligations	15	861	3,441
Trade and Other Payables	24	162,424	195,233
Total Current Liabilities		163,285	198,674
TOTAL LIABILITIES		163,285	199,535
NET ASSETS		1,762,157	2,080,787
FUNDS			
General Fund	21	428,611	694,770
Lifeblood Centre Fund	20	819,317	810,218
Education Foundation Fund	19	141,409	198,285
Student Care Centre Fund	22	372,820	377,514
TOTAL FUNDS		1,762,157	2,080,787

FINANCIAL HIGHLIGHTS

PROMISEDLAND COMMUNITY SERVICES

Statement of Cash Flows for the
financial year ended 31 December 2019

	2019 S\$	2018 S\$
Cash Flows from Operating Activities		
(Deficit) / Surplus representing Operating Cash Flows before Working Capital Changes	(318,630)	(210,389)
Adjustments for:		
Change in Investment	(30,538)	(1,823)
Depreciation of Property, Plant and Equipment	214,589	118,133
Operating Cash Flows before movements in Working Capital	(134,579)	(94,079)
Operating Cash Flows before Working Capital Changes		
Working Capital Changes		
Trade and Other Receivables	53,585	(32,801)
Trade and Other Payables	(32,809)	34,364
Net Cash Flows (Used in) Operating Activities	(113,803)	(92,516)
Cash Flows from Investing Activities		
Purchase of Property, Plant and Equipment	(162,708)	(282,769)
Net Cash Flows used in Investing Activities	(162,708)	(282,769)
Cash Flows from Financing Activities		
Finance Lease Obligations	(3,441)	(3,441)
Net Cash Flows used in Financing Activities	(3,441)	(3,441)
Net Changes in Cash and Cash Equivalents	(279,952)	(378,726)
Cash and Cash Equivalents at beginning of the Financial Year	1,072,875	1,451,601
Net Cash and Cash Equivalents at end of the Financial Year	792,923	1,072,875

FINANCIAL HIGHLIGHTS

Reserve policy

A reserve of 1 year, and no more than five times of its annual operating budget was approved and reviewed by the board on 18th November 2019. The board will monitor on yearly basis upon audited financial statements or any event which requires. Operating reserves exclude all building/project funds, endowment, and sinking funds. The reserve ratio as of 31st December 2019 is **1.15**.

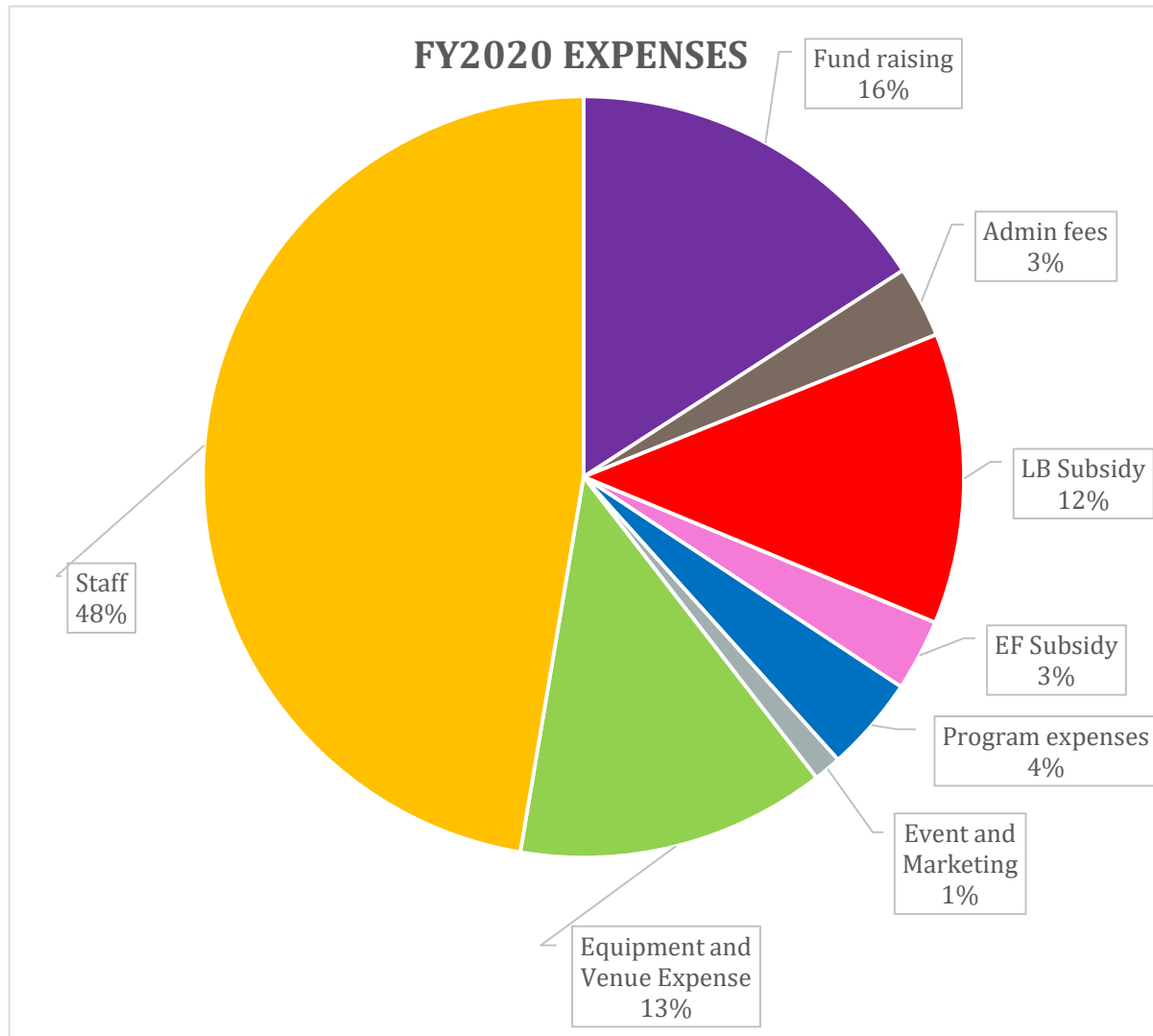
Fund Raising and expenditure plan for 2020

Our main revenue for 2020 will continue to be from public donations with increased presence through online fundraising platforms. Expected increase in government grant from Care and Share scheme, Community Chest and Tote board funds. Student care fees collection expected to remain as same level as 2019.

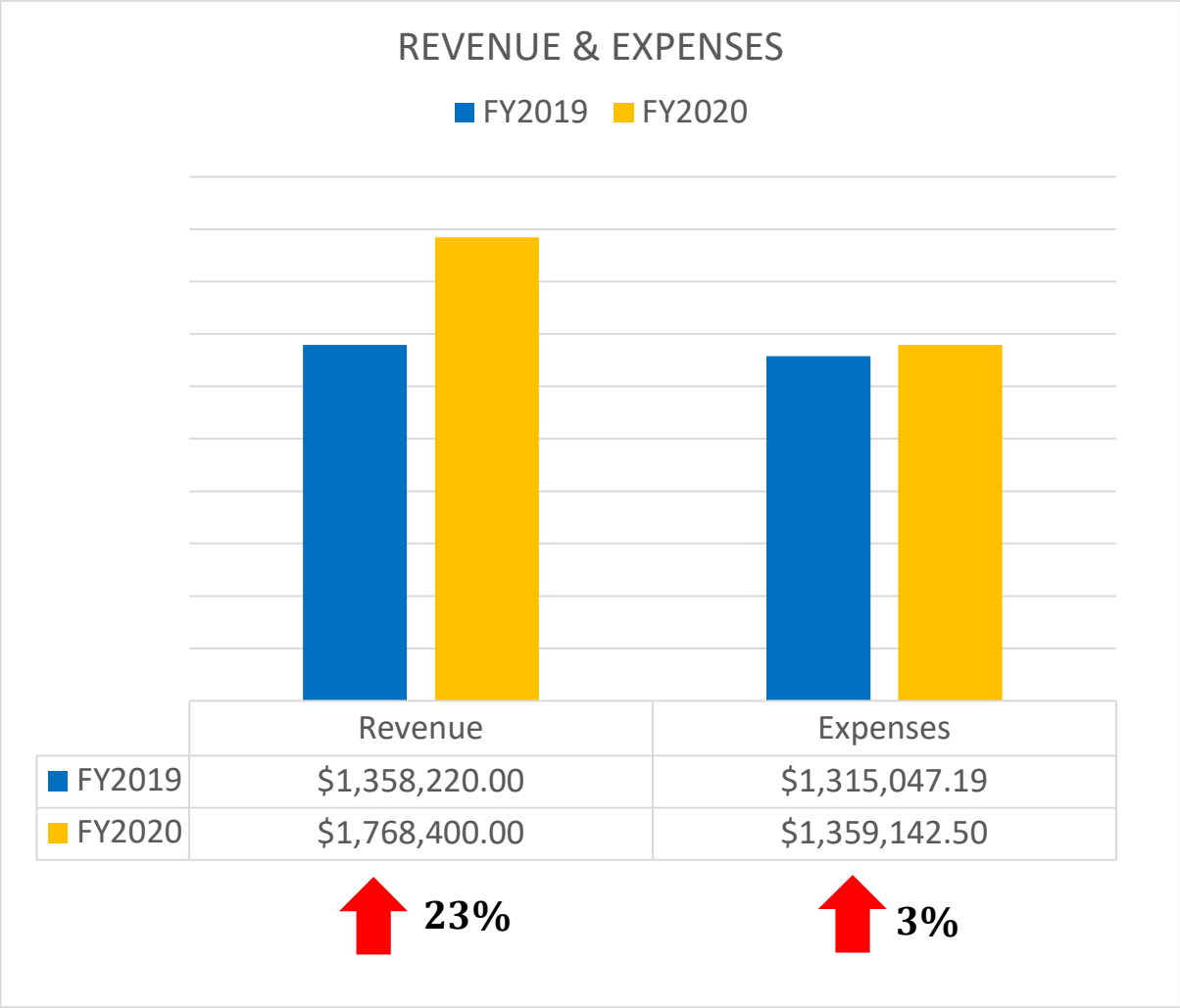
The expenses for 2020 is expected to remain the same except for volunteer expenses due to increase activities which require utilization of volunteers' manpower. The other expenses remain mostly constant.

FINANCIAL HIGHLIGHTS

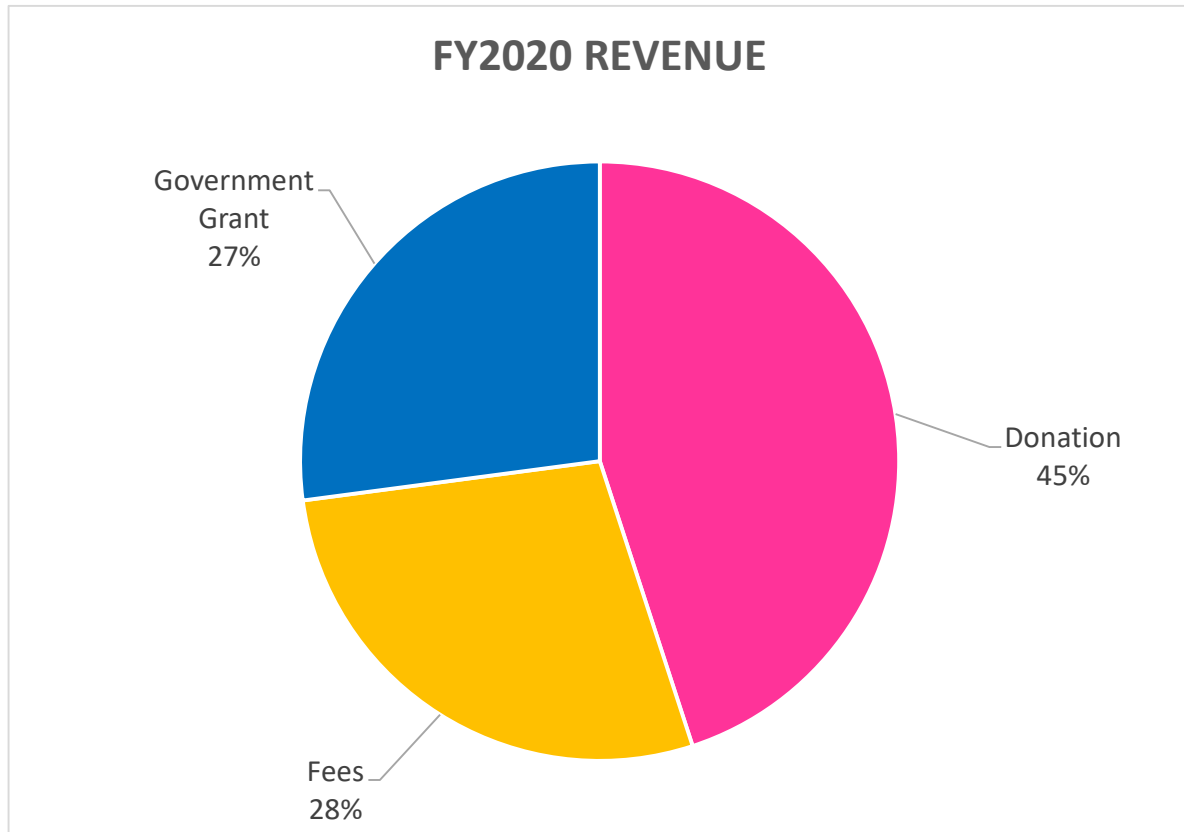
Please refer to the charts below for detail and an overview.



FINANCIAL HIGHLIGHTS

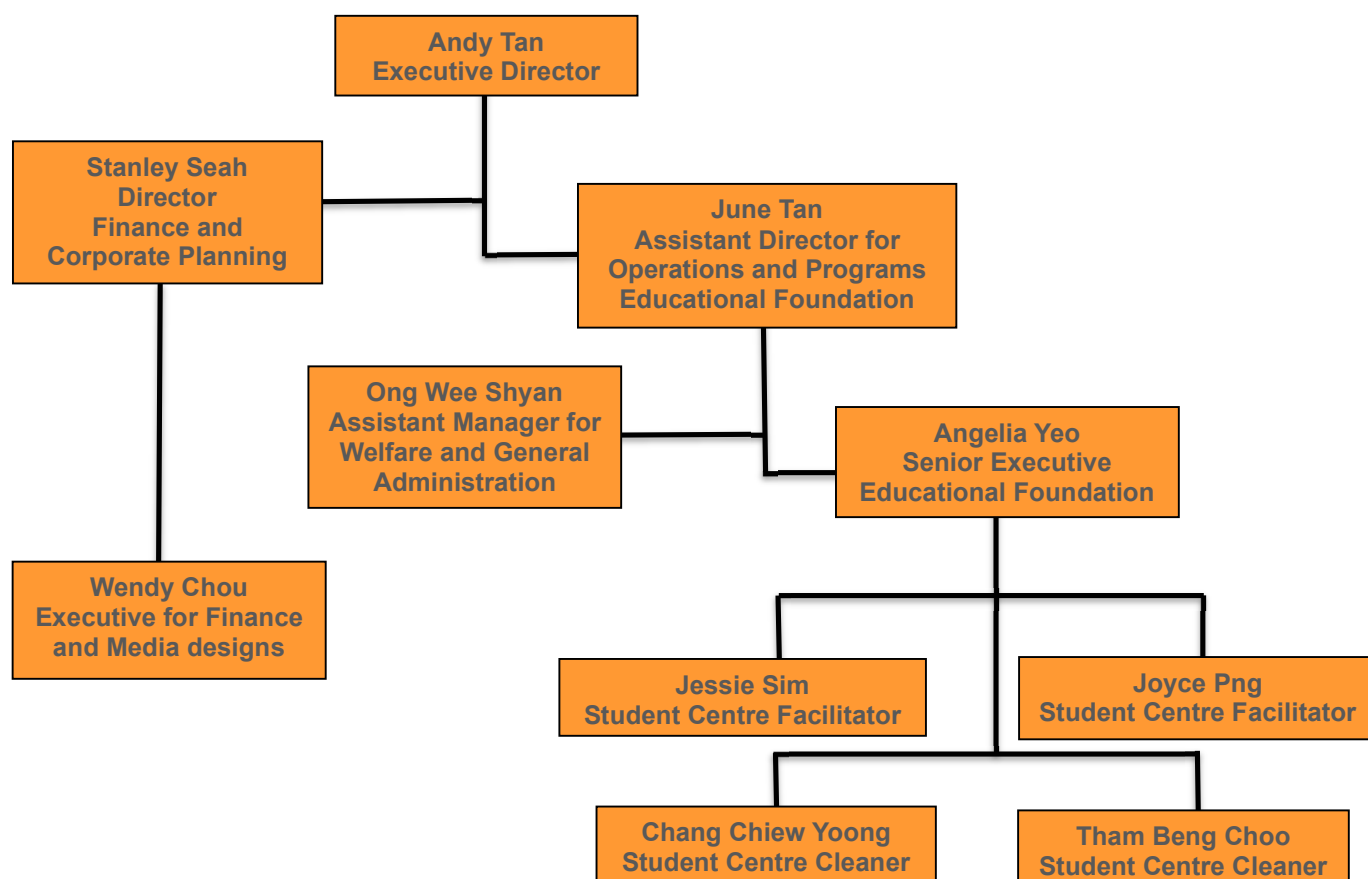


FINANCIAL HIGHLIGHTS



BOARD OF GOVERNANCE

Corporate structure of Promisedland Community Services



All Council Members and employees of the PCS are required to read and understand the conflict of interest policy in place and make full disclosure of any interests, relationships, and holdings that could potentially result in a conflict of interest. When a conflict of interest situation arises, the Member/employee shall abstain from participating in the discussion, decision-making and voting on the matter.

***The 3 highest paid staffs receive annual remuneration of less than SGD\$100,000.**

BOARD OF GOVERNANCE

Auditors

HMS Assurance
59 Ubi Avenue 1
#05-06
Bizlink Centre
Singapore 408938

Board members

Chairman –

Koa Guan Chian
Date of appointment: 23 June 2019
Pastor
Member of PCS appointed on 27 July 2014

Honorary Treasurer –

Tan Kah Yong
Date of appointment: 23 June 2019
Project Manager
Honorary Secretary of PCS appointed on 19 November 2011

Honorary Secretary –

Chiang Wor Peng
Date of appointment: 23 June 2019
Investment Operation Manager
Member of PCS appointed on 19 November 2011

Members –

Ong Eng Jye
Date of appointment: 24 October 2014
Teacher
Member of PCS appointed on 27 July 2014

Seah Hock Choon
Date of appointment: 24 October 2014
Director – Finance and Corporate Planning
Honorary Treasurer of PCS appointed on 19 November 2011

Andy Tan Chuan Lin
Date of appointment: 24 October 2014
Executive Director
Chairman – Promisedland Evangelical Centre

BOARD OF GOVERNANCE

Board Meetings

The board met for four (4) times for the financial year ended 31st December 2019. The quorum of at least three (3) members was fulfilled for each board meeting held on 11th June 2019, 23rd June 2019, 15th September 2019, and 18th November 2019.

The attendance at these meetings is summarised in the table below:

Names	Attendance/Number of meetings held
Tan Kah Yong	3/4
Chiang Wor Peng	4/4
Koa Guan Chian	4/4
Ong Eng Jye	3/4
Seah Hock Choon	4/4
Andy Tan Chuan Lin	4/4

Related / Affiliated Entities

1. Promisedland Evangelical Centre – Mr Andy Tan, Chairman.
2. Ms Angelia Yeo[#], currently a senior teacher in PCS Student Care Centre. She is the wife of Mr Andy Tan. She joined PCS in 2009 as a student care teacher and was officially married to Andy in 2010. Prior to her appointment in PCS, she was working full time as a childcare teacher in another centre. During her youth she was a member and volunteer in PCS's Education Foundation program.
3. Ms June Tan^{1#}, currently an Assistant Director for Operations and Programs in Promisedland Community Services. She is the sister of Andy Tan. She joined PCS as a student care teacher in 2004 after graduating with a diploma from Ngee Ann Polytechnic.

¹Ms June Tan has received remuneration exceeding SGD\$ 50,000 during the financial year.

[#]Both June Tan and Angelia Yeo's job performance appraisal are not conducted by Andy Tan. Their remunerations were decided by the board without any inputs or participation from Andy Tan.

CONTACT INFORMATION

Tel: 6566 9570 / 6566 9571

Fax: 6560 3256

Email: info@promisedland.org.sg

Website: www.promisedland.org.sg

Facebook: Promisedland Community Services

Instagram: promisedlandcs

YouTube: promisedlandcs

Blk 151 Bukit Batok Street 11 #03-248 Singapore (650151)

